

# PHILIPPINES FLOOD CRISIS

## SITUATION REPORT

UPDATE: 1st AUGUST, 2024

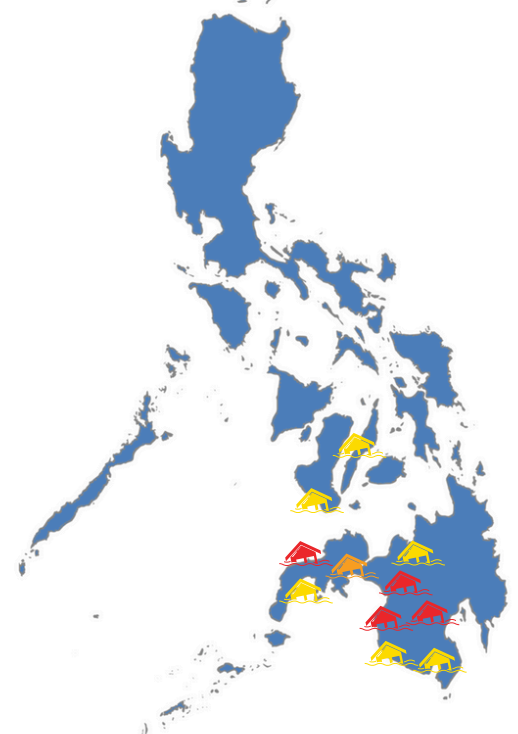
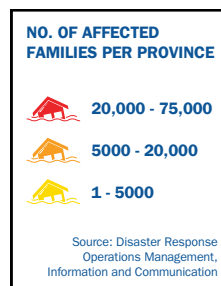


This photo was taken during the distribution of Hygiene Kits in Barangay, Municipality of Pagalungan, Philippines July 2024.

### OVERVIEW

The recent Southwest Monsoon enhanced by Tropical Cyclone "CARINA" has significantly impacted the Philippines, especially from July 22 to 24, 2024. Heavy to intense rains (100-200 mm) were experienced in various regions including Metro Manila, which declared a "State of Calamity" on July 24, 2024. As of July 31, 2024, the Disaster Response Operations Monitoring and Information Center (DROMIC) reported that 1,223,441 families or 3,997,418 persons across multiple regions were affected. There are currently 20,163 families or 78,235 persons in 498 evacuation centers, while 55,329 families or 195,752 persons are staying with relatives or friends. The total displaced population stands at 75,492 families or 273,987 persons. Additionally, 2,158 houses were damaged, with 188 in total and 1,970 partially damaged. (DROMIC)

MAP OF PHILIPPINES



## RELIEF INTERNATIONAL'S RESPONSE

Relief International distributed 150 hygiene kits to 150 vulnerable households. 75 households received the kits in three barangays in the Municipality of Ligawasan, Special Geographic Area, and 75 households in Barangay Dalgan, Municipality of Pagalungan, Maguindanao del Sur. Households were selected based on vulnerability criteria: households with children below 5 years old, persons with disabilities, elderly, pregnant/lactating mothers, and those with an income below the poverty threshold. The hygiene kits comprised dental kits, sanitary kits, and water containers for potable water.

Alongside the distribution of hygiene kits, an orientation was conducted on the importance of routine immunization, sanitation and hygiene promotion, protection messages, and safeguarding policies, with participation from 143 participants in Ligawasan and 131 in Pagalungan.

In partnership with UNICEF and the Rural Health Units of Ligawasan and Pagalungan, Relief International will continue to conduct vaccinations for children below five years old to protect them from illness and potential outbreaks.

Relief International conducted a rapid assessment in Metro Manila on July 25, 2024, with other agencies to assess the situation, especially in flood-prone areas and those in densely populated areas. Following the flooding that shut down commerce in the community on July 23, markets and commercial establishments reopened on July 25 without any noted price increases or shortages of essential goods.

The Delpan Evacuation Center maintained adequate WASH facilities with additional portals, while the BASECO Evacuation Center faced water supply issues, leading to unflushed toilets and urinals. Generally, evacuees were in good health, though cases of skin infections and early-onset leptospirosis were treated promptly. Coughs and respiratory infections are being closely monitored due to cramped conditions. Food provisions were handled by local and national welfare offices, with additional support from officials and organizations. Flooding affected houses in three barangays, with significant damage reported in Barangays 649 and 20. Livelihoods, primarily blue-collar jobs, and small businesses were disrupted, necessitating cash assistance for recovery. Post-flood, most roads became passable, and debris clearing began. Communication remained stable due to good cellular coverage and accessible wi-fi hotspots in the highly urbanized City of Manila.



Distribution of Hygiene Kits in Ligawasan under Relief International Emergency Response, Special Geographic Area, Philippines, July 2024.



Hygiene Awareness Session in Ligawasan Special Geographic Area, Philippines, July 2024.

## PRIORITY HUMANITARIAN NEEDS

### TOP 3 SECTORS/CLUSTERS REQUIRING PRIORITY ASSISTANCE

1. Health & Nutrition
2. Shelter
3. Livelihood

### TOP 3 PRIORITY ASSISTANCE REQUIRED ON IDENTIFIED SECTOR/CLUSTER

1. Medicine and outbreak mitigation
2. Shelter repair and rebuilding
3. Cash

## HUMANITARIAN COORDINATION & ADVOCACY

While it remains uncertain when the flooding will subside, Relief International has promptly begun its response in the BARMM (Bangsamoro Autonomous Region in Muslim Mindanao) region.

In Metro Manila, concerns about outbreaks of upper respiratory diseases due to the rapid change in weather and cramped conditions in the evacuation center, as well as dengue caused by stagnant water in homes and surrounding areas in the community, need to be addressed. Assistance for shelter repair is also needed for families whose homes were irreparably damaged, enabling them to return and start recovering from the effects of the flooding. Cash-for-work programs or financial assistance are required to support those with daily incomes, compensating for lost work. Relief International raised an alert to trigger the Anticipatory Alert on Disease Outbreak through Starfund.

Relief International has launched its WASH (Water, Sanitation, and Hygiene) and Health programs, aiming to provide immediate assistance. However, scaling up these efforts is crucial and requires support from donors. This expansion will enable the affected populations to access essential services while addressing their urgent needs and mitigating the impact of the disaster.

### CONTACT

Lydia Mutimbanyoka  
Mark Atterton  
Sandra Nakhle

Global Humanitarian Director, [lydia.mutimbanyoka@ri.org](mailto:lydia.mutimbanyoka@ri.org)  
Africa/Asia Regional Director, [mark.atterton@ri.org](mailto:mark.atterton@ri.org)  
Africa/Asia Regional Programs Director, [sandra.nakhle@ri.org](mailto:sandra.nakhle@ri.org)